

September 14, 2023

DASH Funding Opportunity

Stephanie Johnson (she/her), Incubator Project Manager

Melissa Moorehead (they/their), DASH Co-Director



Data Across Sectors for Health

DASH is co-led by the Illinois Public Health Institute and the Michigan Public Health Institute, with support from the Robert Wood Johnson Foundation.



Robert Wood Johnson Foundation

Purpose

To introduce the Incubator, a unique grant and support program for past grantees interested in advancing equity in data governance and policy efforts.

DASH aims to support the development of **equitable governance** in data-driven initiatives, with the ultimate goal of large-scale **systems change**.

With the Incubator, DASH aims to **advance equity** both through program impact and through the **grantmaking process**.

To that end, the Incubator is not a conventional grant providing participating organizations with resources and expertise alone; it is a **funding and support** collaboration where participating organizations **co-design** the meaningful work that they then implement.

Agenda

Review where DASH has been, so we can explore and plan for where DASH is headed.

- I. DASH Framework
- II. DASH Learning
- III. DASH Phase Four
- IV. DASH Funding Opportunity: Incubator

DASH Framework
Data Governance
Policy & Market Forces
Systems Change

DASH Learning
Waters of Systems Change
RECoDE & National Inventory
Past Programming

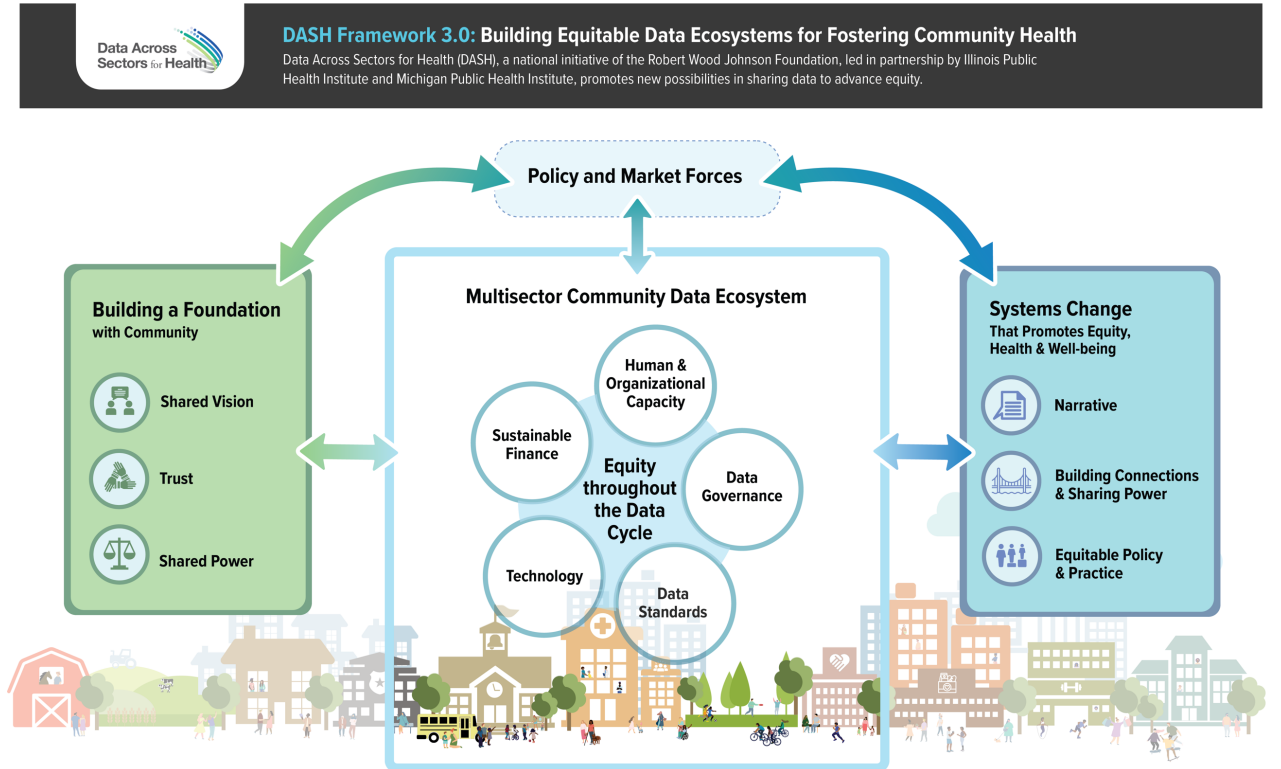
DASH Phase Four
Overview of Objectives

Funding Opportunity: Incubator

Setting the Scene

DASH Framework

Through awardee insights, our national inventory survey, the All In network, and thought partners, DASH has identified key factors which are important for sharing and using data across sectors and with communities to support more equitable systems that create the conditions for health and well-being.

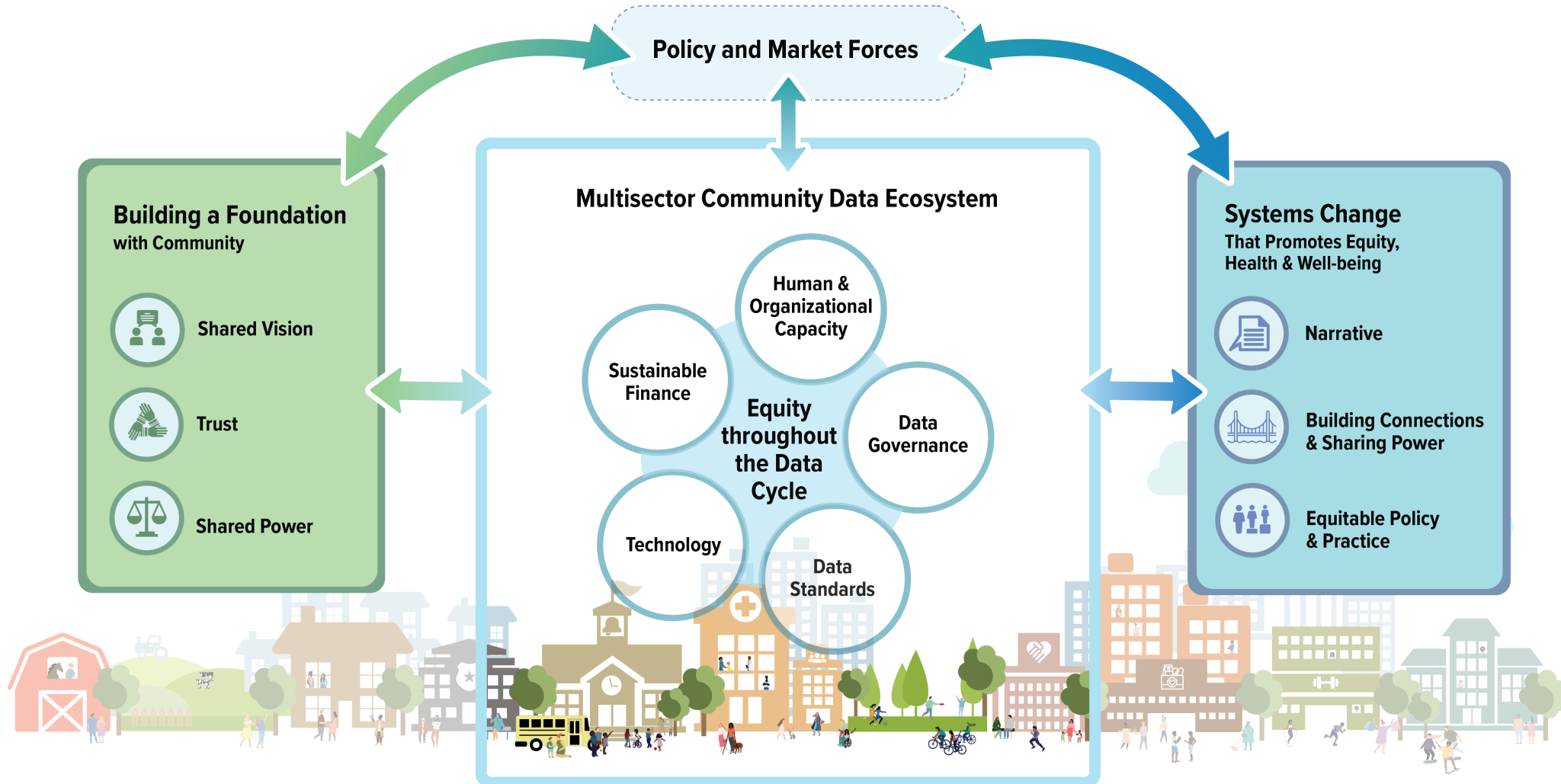


DASH Framework



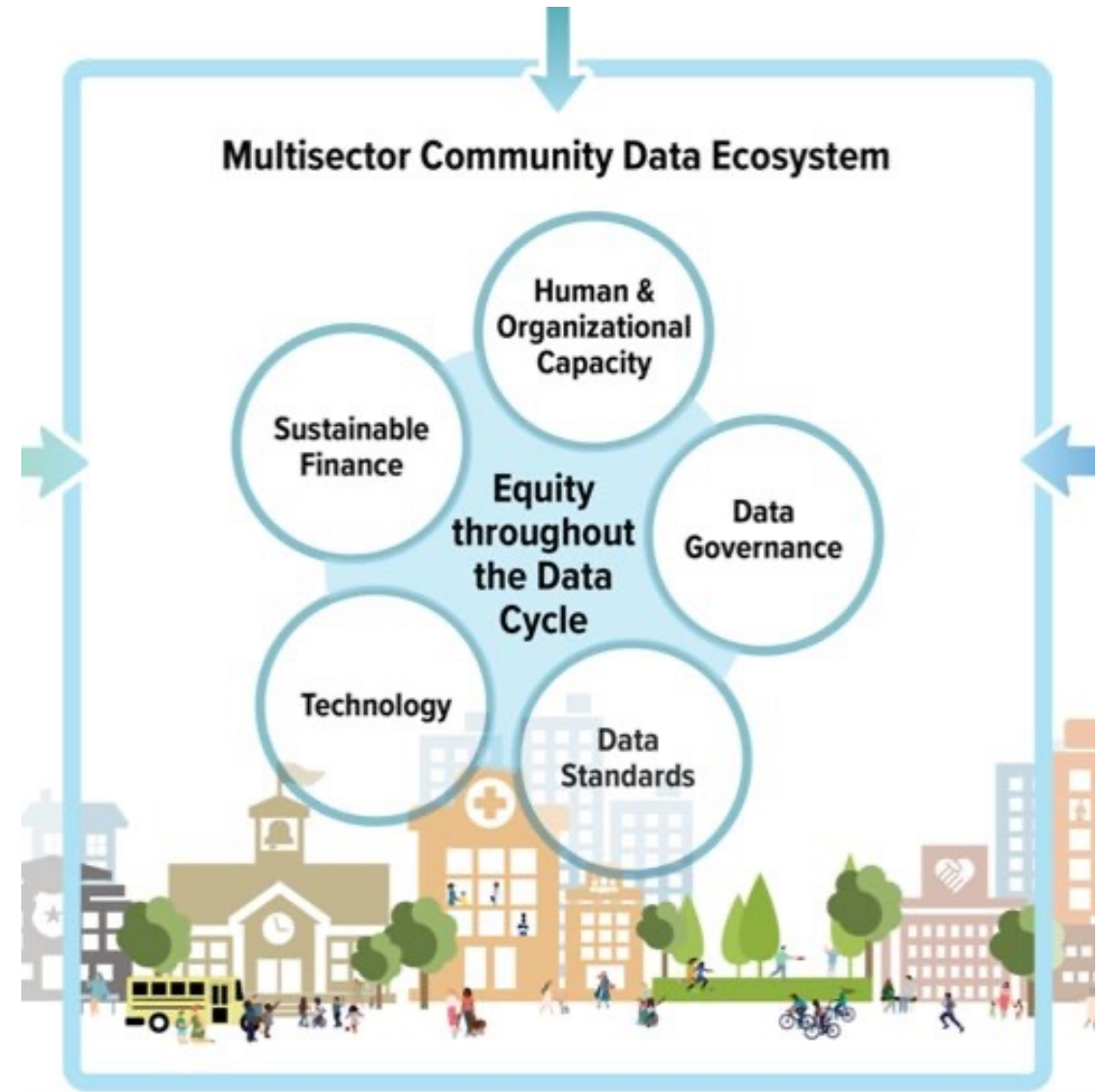
DASH Framework 3.0: Building Equitable Data Ecosystems for Fostering Community Health

Data Across Sectors for Health (DASH), a national initiative of the Robert Wood Johnson Foundation, led in partnership by Illinois Public Health Institute and Michigan Public Health Institute, promotes new possibilities in sharing data to advance equity.



Equitable Data Ecosystems

Data ecosystems are made up of the what, the who, and the how that enables sharing data and collaboration within a community.



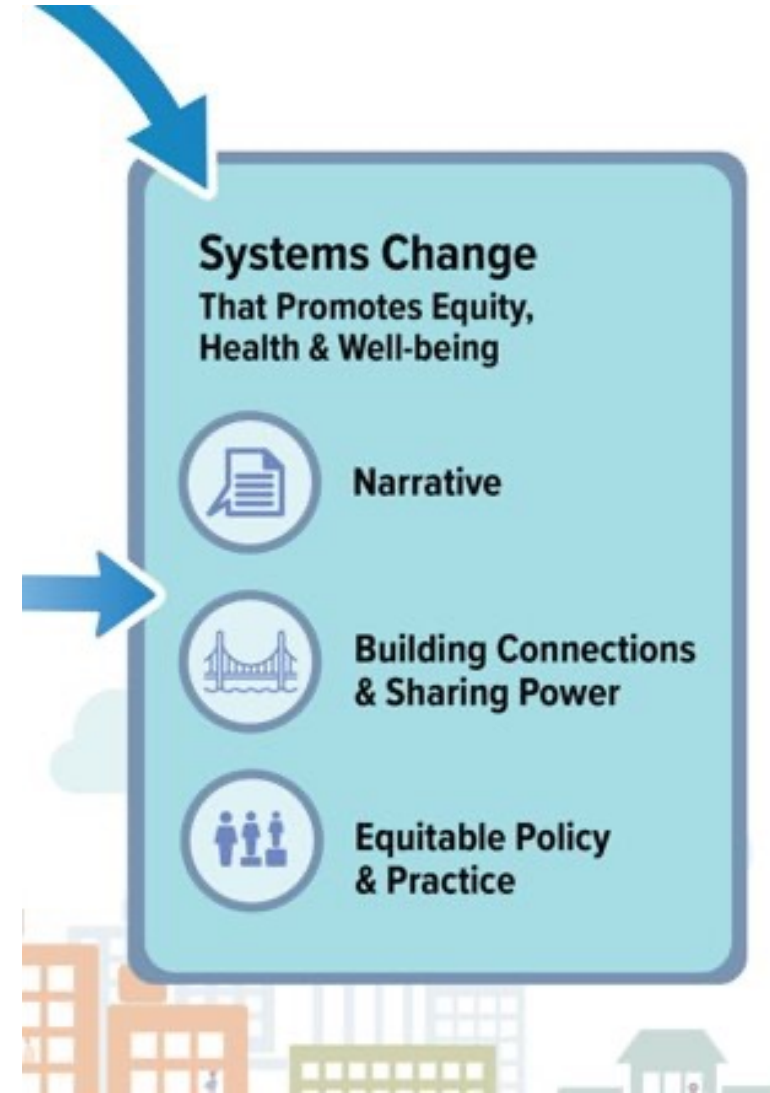
Policy & Market Forces

- Actors in community data ecosystems are operating in markets that exert powerful forces on competition and collaboration
- State, Federal, and local government policy impacts data ecosystems (and vice versa)



Systems Change

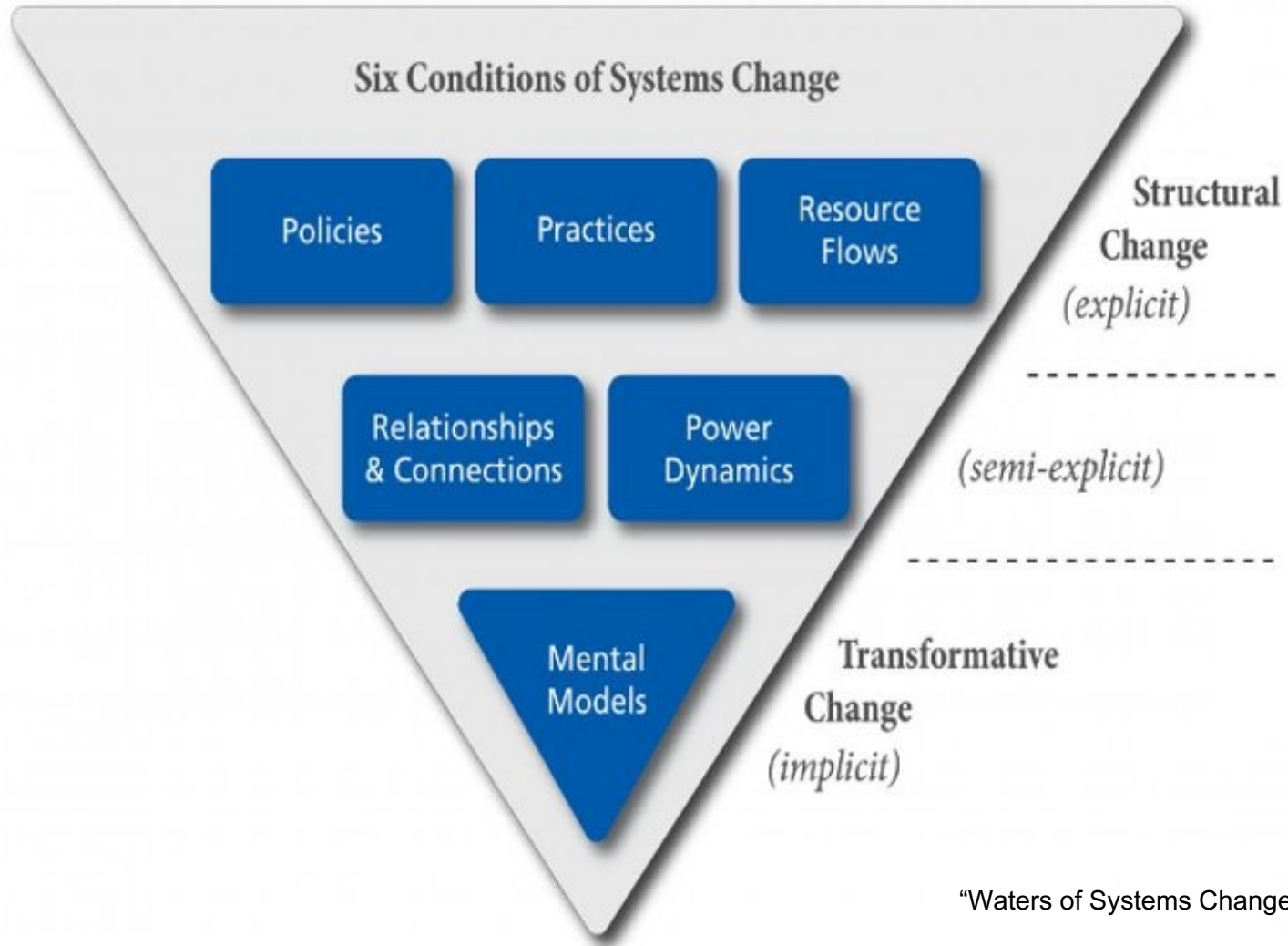
Changing systems requires addressing root causes of inequity resulting from complex, interacting parts.



DASH Learning

And what has influenced the new funding opportunity

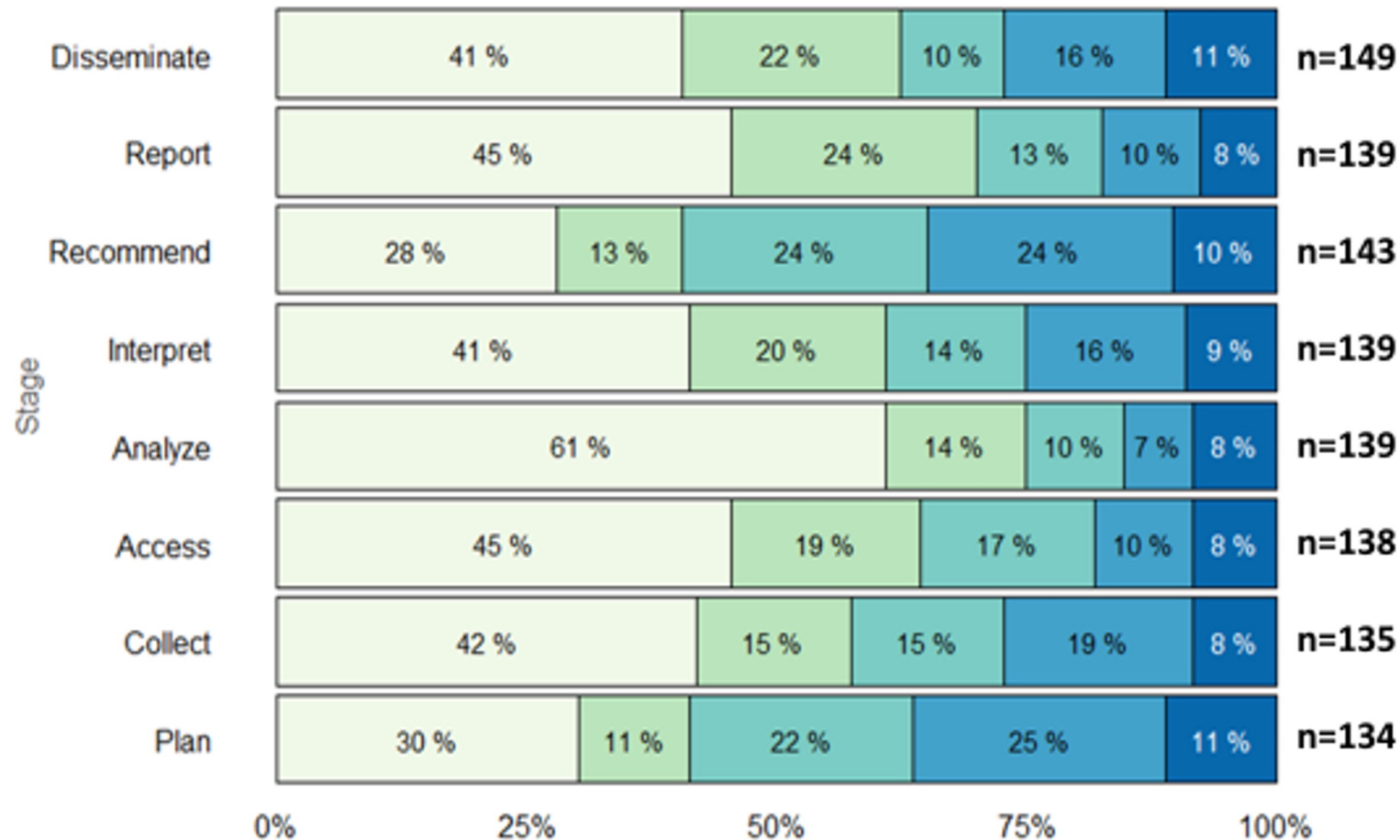
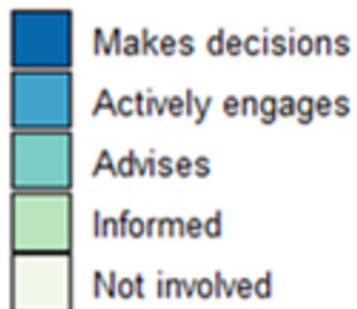
FSG Waters of Systems Change



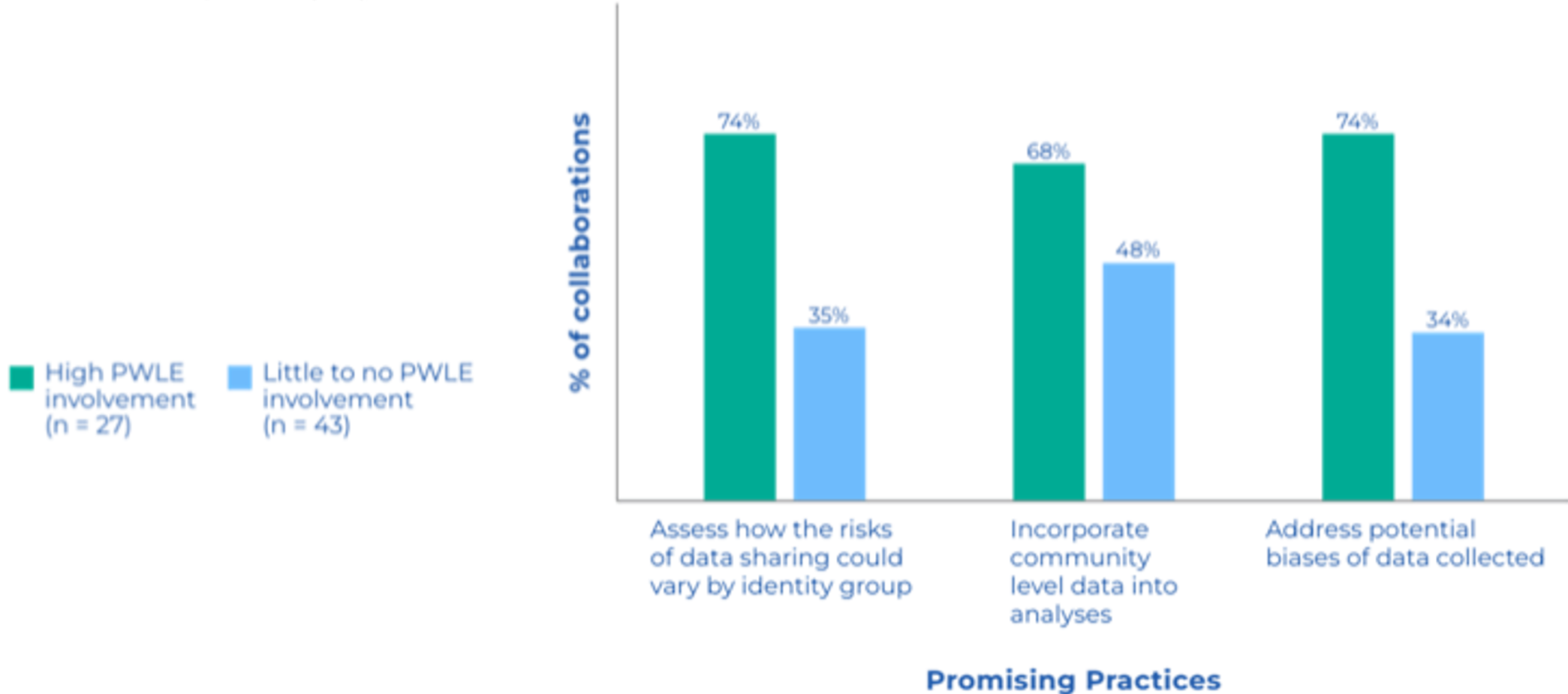
“Waters of Systems Change,” Kania et al (2018)

There is insufficient involvement of PwLE in data sharing

Continuum of Involvement



High PwLE involvement is associated with better data equity practices



Examples: Practices that Center Equity

Assess how risks of data sharing could vary by identity group

Potential risks include:

- Reinforcing negative narratives
- Harming individuals
- Replicating structural racism

Incorporate community level data into analyses

- Social determinants are conditions in the environments ... that affect a wide range of outcomes
- Structural indicators (rather than individual) train the eye towards policy/program change

Address potential biases of data collected

- How might over- or under-representation in data be caused and drive biased interpretation
- Balance risk and protective factors – avoid deficit-based approach

Past DASH Programming

Our current funding opportunity is an attempt to weave the most applicable learnings from prior programming into support for the types of activities we want to support moving forward: centering equity, sharing power with community, and elevating best practices for equitable data ecosystems.

LAPP

The Learning and Action in Policy and Partnerships (LAPP) funding program helped community partners that are engaged in data sharing projects connect with state policymakers.

ABCD

The Asset-Based Community Development (ABCD) program funded community collaborations with the aim of identifying interventions that can combat health disparities in communities that have been historically and systematically denied a full opportunity to participate in aspects of economic, social, and civic life.

MENTOR

Under the Mentor program, seven experienced 'mentor' organizations offered coaching and peer-to-peer learning to small groups of 'mentee' organizations to help them develop their own data-sharing abilities.

DASH Phase 4

RWJF funding through 2025

DASH's Current Learning Priorities

Within the field of data sharing

Fostering Community Capacity for Equitable Data Ecosystems

- What does it take for communities* to have an active role in equitable data ecosystems?
 - What are supportive policies and practices?
 - What relationships and power dynamics need to be challenged?
 - What shifts in mental models are required?

Building Equitable Data Governance

- What are promising practices for establishing equitable community* data governance?
 - What facilitates communities* particularly people who have lived experience of the systems to play an active role in data governance?
- What is the role of government?

Leveraging Equitable Data Ecosystems for Systems Change

- What does it look like to leverage shared data for systems change?
 - What conditions are shifted as a result?
 - How are narratives and the mental models they embody changed?

**Community refers to collaborations made up of organizations and community members in a specified geographic area and includes people who have lived experience of the systems the collaboration is seeking to transform.*

Objective I: Support equitable data ecosystem development that holds public health, health care and social services systems accountable to community members and hold states accountable to communities aligning across sectors for health equity

Objective II: Lead national partnerships that accelerate development and adoption of sustained, equitable practices and policy around data sharing

Objective III: Identify and amplify best practices of equitable community data ecosystems

Incubator

DASH support for equitable data ecosystem development that holds public health, health care and social services systems accountable to community members and hold states accountable to communities aligning across sectors for health equity



Our Intention

- DASH programming more effectively directed at supporting **equitable systems change** efforts
- **Share assets** with communities to **support equitable community-level data-sharing** work and build capacity at the implementation level to directly **inform policy**
- Support to **develop governance** and capacity for **equitable data ecosystems**
- Identify or create adaptable and replicable **governance models**

Results in...

- CBOs have more power to lead defined **data-sharing governance initiatives**
- Community members have a more equitable say in **how data are collected, shared, and used**
- Community members have **leadership roles** in data ecosystem

Expected Impact

- Organizations and collaborations often shut out of traditional funding opportunities have greater visibility and capacity to pursue sustained investment
- New models of philanthropic support demonstrate commitment to equity
- Measurable data governance practices adopted by community stakeholders that maximize benefits and minimize harm for people who have been traditionally excluded or marginalized
- Data are more likely to be used for true narrative and systems change
- States will understand and act on community-articulated needs for/from the shared data

- Incubator should strive for internal programmatic equity as well as understand how to promote Equitable Data Ecosystems (EDEs)
- All teach, all learn model, with nothing wasted on “ticking a box”
- Deeper relationships and peer/coaching connections are as valuable as cash
- ‘Aha’ moments
- Recipients want operational cash, not necessarily new projects

The Offer

- Payment for time
- Opportunity to learn about the landscape
- Opportunity to design the program and cohort

What's Included?

- Co-Design
 - Peer-to-peer
 - SME/Mentor
 - Technical Assistance
- Opportunity to co-design your journey through the Incubator
 - Peer-to-peer sharing and learning opportunities
 - National thought partner and mentor support and guidance around data governance, policy, and equity
 - DASH staff support and facilitation to connect the dots and to address any challenges/barriers that arise

Award Amount



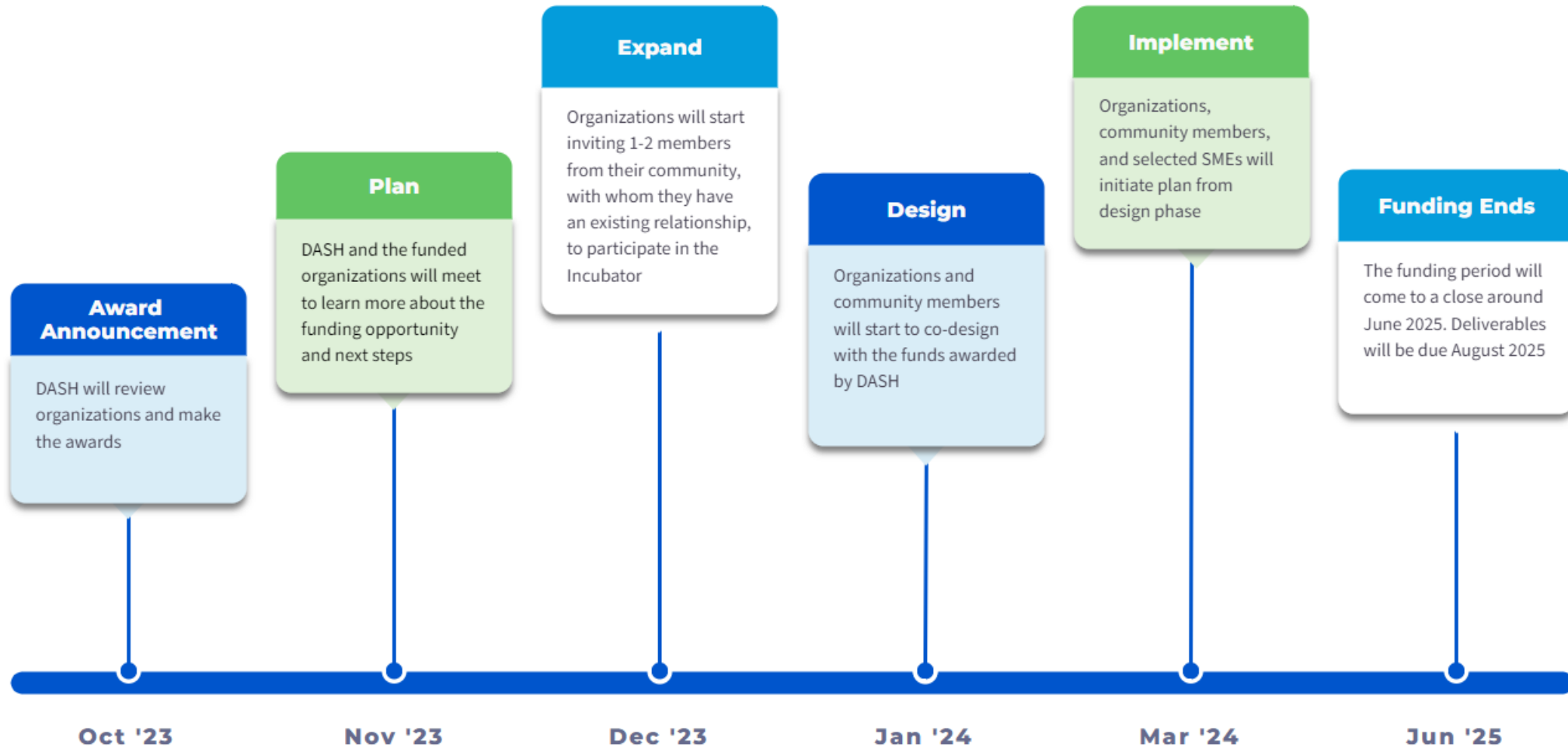


- Selected organizations will invite 1-2 members (paid) of their community, with whom they have an existing and established relationship
- The organizations and community members will then co-design the project and how they'd like to utilize the funds that will ultimately impact the community in which the community members live
 - At DASH we believe the organizations attempting to impact the community are ultimately accountable to the members living within the community
- The Incubator participants will focus on the way data is governed and utilized to inform policy that will heavily influence health outcomes, such as social and environmental factors like racism and access to food and housing.
- The Incubator participants will also determine which technical assistance and subject matter expertise will be most beneficial for their workplan and how they would like to utilize the resources, services, and support.

SME Domains

- Policy Advocacy- organizational
- Policy Advocacy- individual
- Public Health Information Systems (DMI)
- Public Health functions
- Healthcare data systems
- Healthcare Payment systems
- CBO sustainability
- Community Power Building
- Organizational Equity
- Equity in Data
- Data for Equity
- Data governance

Incubator Timeline



Time Commitment Estimates

Plan & Expand Phase

- ~4hr/month for 2 months
 - Includes planning with DASH staff and internally, as well as communication with community members

Design Phase

- ~6hr/month for 2-3 months

Implementation Phase

- 1:1 sessions with coach/mentor
- Peer-to-peer sessions with the whole group
- 1:1 sessions with DASH program staff

**Organizations will determine the cadence, with a minimum of each session occurring once a month*

How to get involved

- Request for Information sent out to those interested
 - The RFI will include questions with equity- and sustainability-focused indicators, along with space to share information on the desired impact
- No application page! To express interest, email [**sjohnson@mphi.org**](mailto:sjohnson@mphi.org)
 - The intention with this is to make the process a little less formal and to make it a conversation, rather than an application process

Equity-Focused Indicators

These indicators are meant to help identify organizations with sufficient experience

existing relationship with community members

racially inclusive partners

equity-centered mission

equity operationalized within organization

money flow & accountability

impact measures

PwLE included in decision making

power-sharing within organization

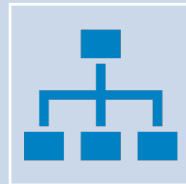
equity incorporated into policies & procedures

Sustained & Sustainable Indicators

These indicators are meant to help identify organizations with sufficient experience



Data-sharing partners are rewarded for their contributions to EDE and it is part of their work (not just mission)



There are succession plans in place for key individuals/roles



Public documentation of long-term agreements between data-sharing partners



Thank You!

IPHIONLINE.ORG

DASHCONNECT.ORG

MPHI.ORG

To express interest in the Incubator funding program,
please email:

Stephanie Johnson, DASH Project Manager
sjohnson@mphi.org

To find referenced resources or for more information on
DASH and past DASH funding programs, visit
dashconnect.org