

**Data Across
Sectors for Health**



DASH Webinar Series
**Advancing Community Health
Through Equitable Data Ecosystems**

Session II:
Shared Community Data Ecosystems
July 26, 2022 | 2:30 p.m. – 4:00 p.m. ET

Tips for Using Zoom



- ASL interpretation: please have your screen view set to “speaker view” to view speakers AND interpreters
- Use the chat for easy communication between everyone
- Use the Q & A module to submit questions to presenters
- Closed captioning: you can hide subtitles in your control panel
- Use the hand-raising feature to come off-mic during Q&A
- For technical assistance, please DM Celestine

Data Across Sectors for Health (DASH)



DASH is co-led by the Illinois Public Health Institute and the Michigan Public Health Institute, with support from the Robert Wood Johnson Foundation.



Data Across
Sectors for Health



Robert Wood Johnson Foundation

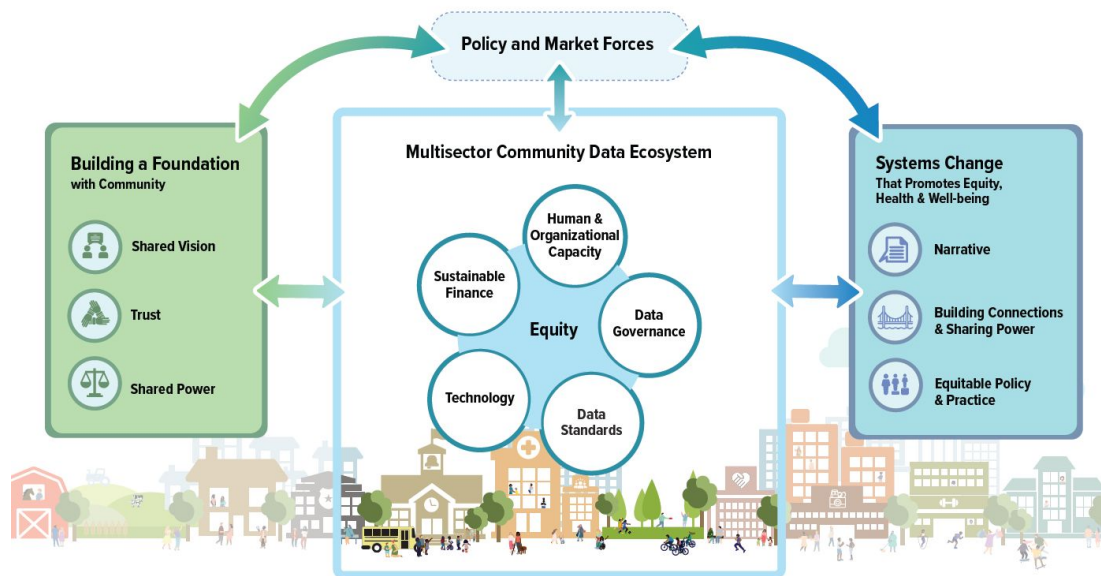
The DASH Framework

Equitable Data Ecosystems for Advancing Community Health

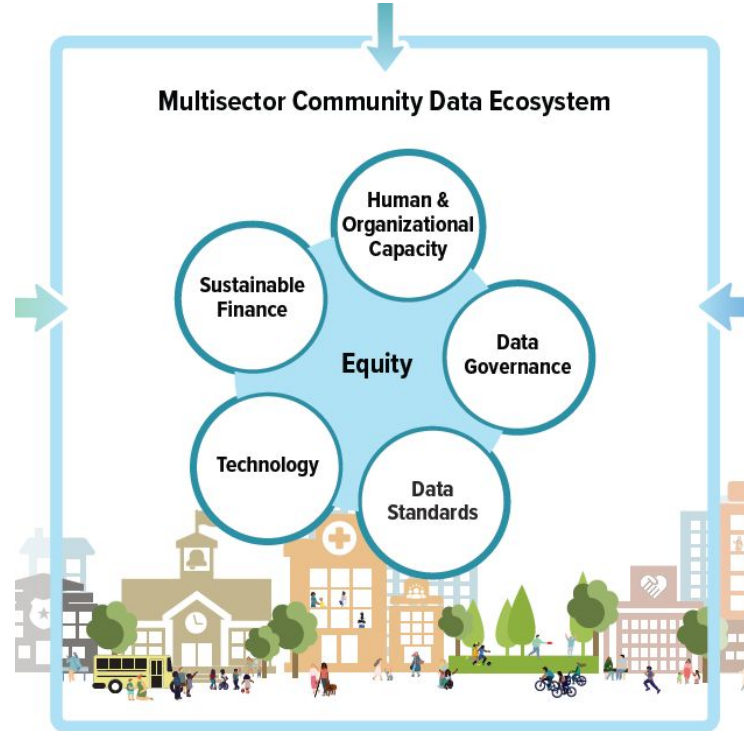


DASH Framework 3.0: Building Equitable Data Ecosystems for Fostering Community Health

Data Across Sectors for Health (DASH), a national initiative of the Robert Wood Johnson Foundation, led in partnership by Illinois Public Health Institute and Michigan Public Health Institute, promotes new possibilities in sharing data to advance equity.



Community Data Ecosystems



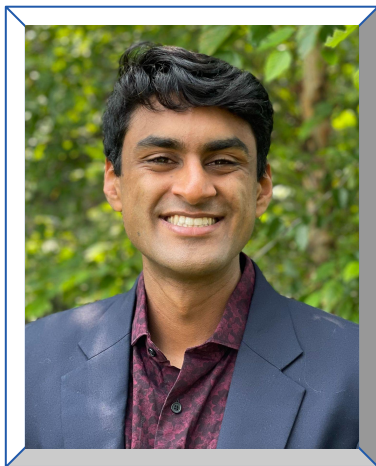
Session Goals



1. Understand how to apply an equity lens to the data cycle by engaging people with lived experience (PWLE) in the data sharing process.
2. Describe the iterative process of developing and implementing the components of the data ecosystem to impact data sharing initiatives and the community.
3. Identify the various components of a data ecosystem and how the components interact with each other.

Kicking off the Conversation

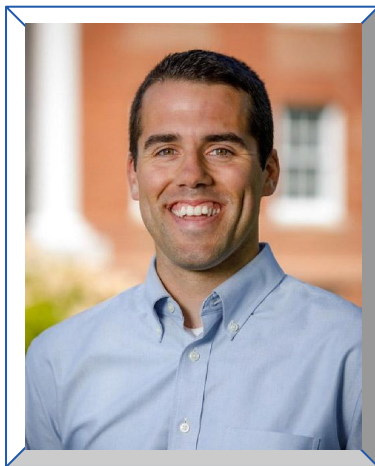
Today's Presenters



Milan Chuttani

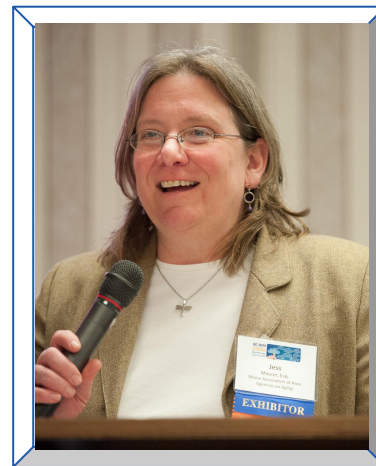
Data Analyst

Vital Village Networks



Chad MacLeod

Director of Product &
Communication
HealthInfoNet



Jess Mauer

Executive Director
Maine Council on Aging

Maine CIE Roadmap – From Start to Success





Core Values:
Community-Led
Equity
Access
Person-Centered



What's a CIE?

A CIE...	A CIE IS NOT...
Cultivates trust and capacity within the community.	...a specific technology or platform, nor is it <u>solely</u> dependent on technology to connect individuals to services and resources.
Enables individual agency and understands root causes of resource gaps.	...referral-centric nor does it promote a one-size-fits-all solution for data integration.
Drives systems change.	...intended to solve one issue. The goal should not be to solve for one organization or sector, but for the entire system of care.
Is a community-led collaborative.	...led by one organization. The CIE is not led by one organization or sector, nor is the strategic direction dictated by the desired outcomes of one sector.
Designed to uplift and assist in providing agency to the communities who experience the starkest disparities and inequities.	...centered around institutional goals or interests.

Source: 2-1-1 CIE San Diego

Maine CIE Foundations

- **Goal:** Define a shared vision and framework for the further development of a CIE in Maine that key stakeholders agree to collaboratively pursue.
- **Vision:** Better the health and wellbeing of Maine residents through improved cross-sector information sharing, referral exchange, and care coordination by shifting from a reactive-to-proactive approach to providing person-centered care.



NETWORK PARTNERS



SHARED LANGUAGE



INTEGRATED TECHNOLOGY



RESOURCE DATABASE



COMMUNITY CARE PLANNING

Maine CIE Framework & Components

From community engagement to community care planning, the Maine CIE framework aims to build a more integrated and holistic design to care delivery that bridges clinical and community settings.

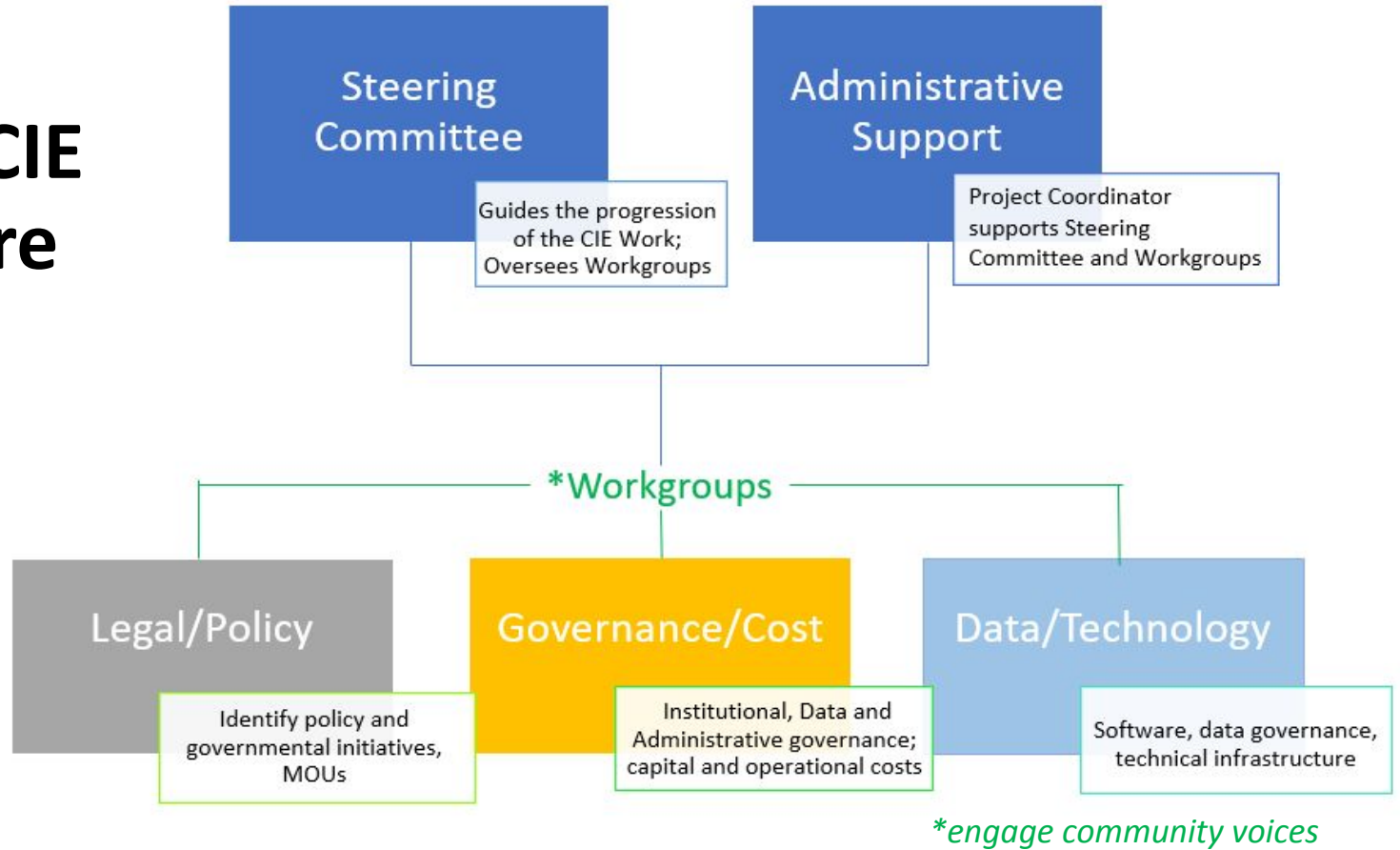




Maine CIE Next Steps

- **Strengthen Stewardship:** Develop a Steering Committee, led by the Maine Council on Aging for project coordination and administrative support, that includes key stakeholders across clinical and community settings.
- **Engage Community Voices:** Include people with lived experience to help inform/participate in decision-making and to develop community trust throughout every governance level.
- **Create Deep-Dive Workgroups:** Establish workgroups for (a) legal and policy, (b) governance, and (c) data and technology components to create more detailed project and implementation plans.
- **Build Upon the Use Case:** Present a comprehensive use case that helps those who are unfamiliar with community information exchange gain a better understanding by providing a real-world example.

Maine CIE Structure





Developing a Community-Driven Housing Data Tool

July 26, 2022



Key Learnings

- Community leadership is critical in all stages of the data story creation. **Final decision making must be placed in the hands of community members.**
- Community-driven data means **broadening your lens** of what is considered data.
- **Continued, informed consent** is critical to successful data storytelling, especially for qualitative work.



What is a Data Story?



A “data story” serves as a tool for positive change by **translating information into a compelling narrative**, often tailored to a specific audience.



Intentional narrative, developed by community, around **why policies, practices, and programs** are needed **to rise above a particular challenge.**

- Illustrate a process or historical trend
- Describe relationships and structures
- Make the case for a key message or ask.



Community-driven data stories:

- Focus on solutions that communities have developed rather than describing the problems themselves.
- Can be utilized as an intervention and used to evaluate community progress.

The graphic features a central green rectangular box with the text "Community Housing Data Tool" in white. The background is white with a network of thin, light brown lines and several thick, dark brown curved lines. Small green rectangular markers are placed at various points where the lines intersect or end.

Community Housing Data Tool

Goals



Youth advocating for needle safety near Orchard Gardens School. Courtesy of The Boston Globe.

- Provide resources to individuals, families, and organizations about the state of housing in Boston communities
- User-friendly data visualization to support personal decisions, community advocacy, and systems change
- Interactive and mobile friendly
- Strengths-based approach highlighting existing community initiatives

Developing the Community Housing Data Tool

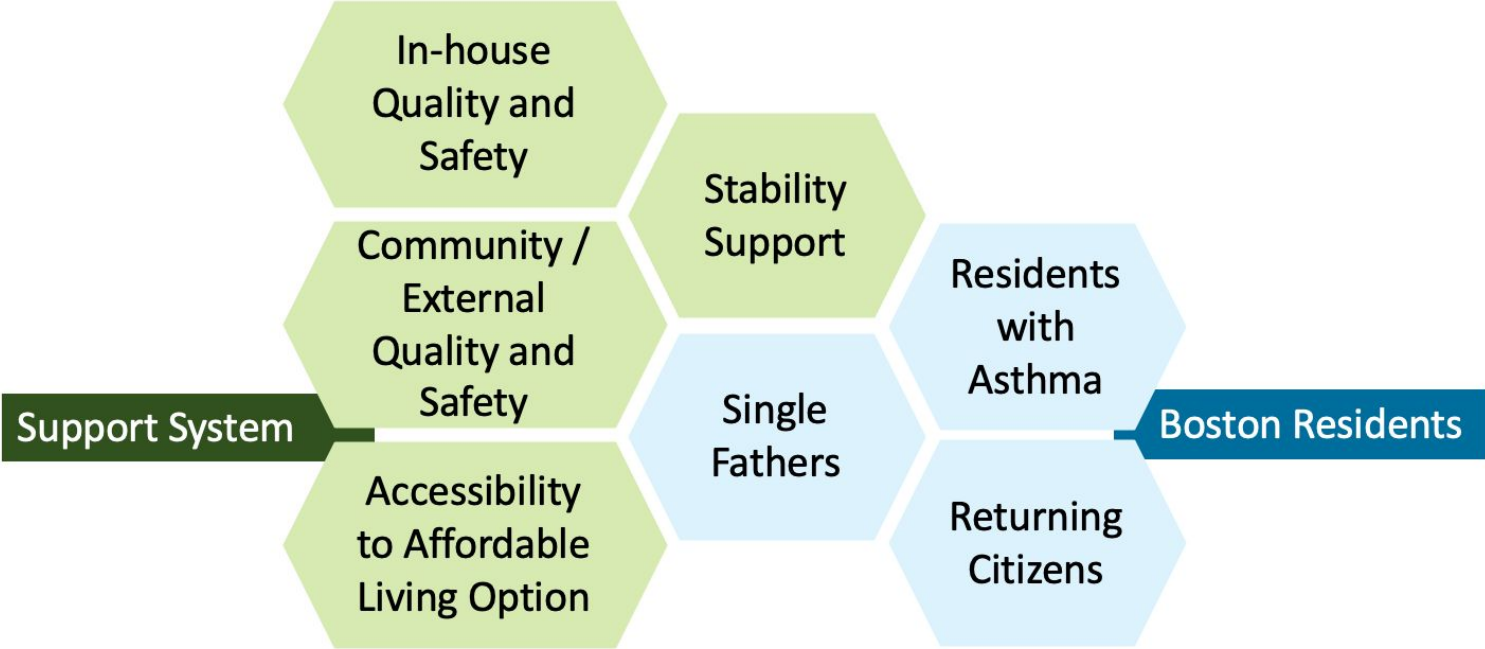
Sharing data for population health advocacy

- Data linking health and housing
- Data maps – spatial inequity
- Interactive data and resource maps for Boston community (city of Boston, MA)

Community driven approach: *Community Data Workgroup*

- Diverse individual and organizational community partners
- Heavily involved from the development stage: identified topics and focus population groups

Identifying a Key Message



Community-Driven Data Collection

<i>Topic</i>	<i>Data & Resources</i>
Support Systems	
In-house Quality and Safety	Blood Lead Levels
	Smoking Prevalence
Community/External Quality and Safety	Needle Safety
	Crime Density
	Community Resources
Accessibility of Affordable Living Options	Severe Rental Burden
Stability Support	Eviction Rates
	Eviction Related Resources
Boston Residents	
Residents with Asthma	Home Inspection (Breathe Easy at Home)
Returning Citizens	Stories from Community
Single Fathers	Resources & Single Father Families

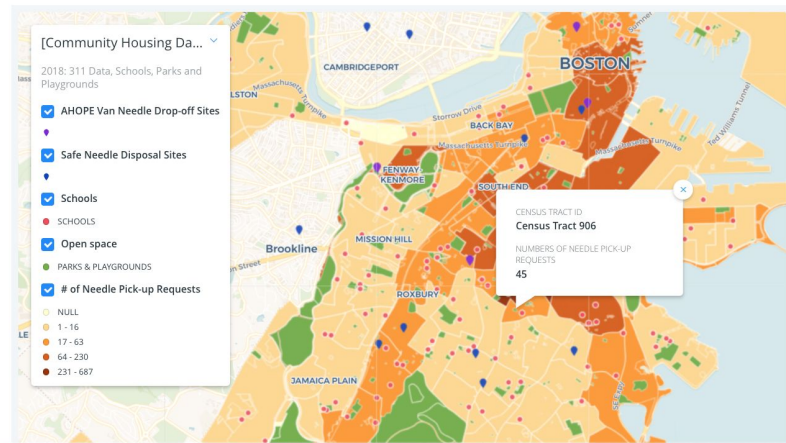
Demo



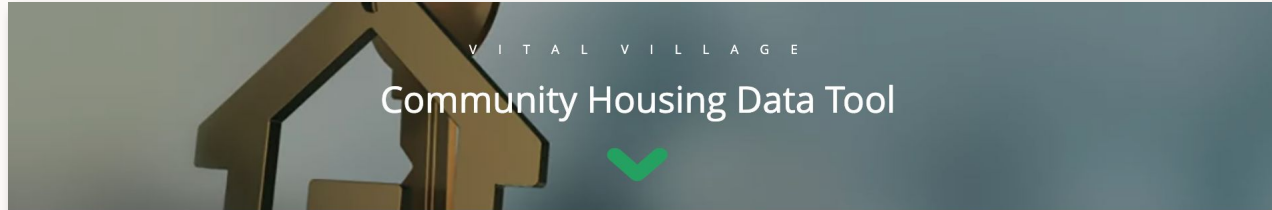
Community/External Quality and Safety

Needle Safety

The map shows BOS:311 needle pick-up requests at the census tract level in the year 2018. Locations of safe needle/syringe disposal sites in Boston and the nearby cities are available. Public and non-public schools as well as parks, playgrounds, and athletic fields are displayed in the data map. The legend is based on Jenks natural breaks.



Community Stories from Returning Citizens



Returning Citizens



Community Stories

From the Cypher Workshop
"Reflect. Recall. Reimagine."

Storytellers share stories about incarceration, recovery, and housing in Boston. They also share ideas of ways forward.

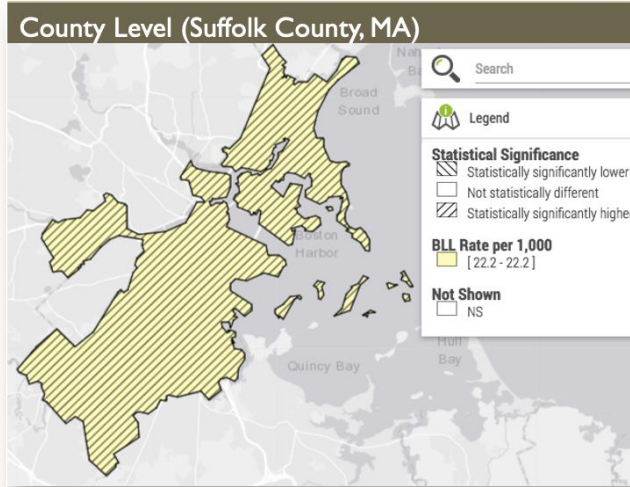
Integrating equity within data sharing efforts that center the lived experience and voices of populations that have been relatively less highlighted in discussions on housing.

Data Ethics and Consent Considerations

Agreements drafted and led by storytellers:

- Where will the story live?
- How long does the data story be shared?
- How is the narrative told?
- Options to opt out of sharing the story in the future
- Images and sound

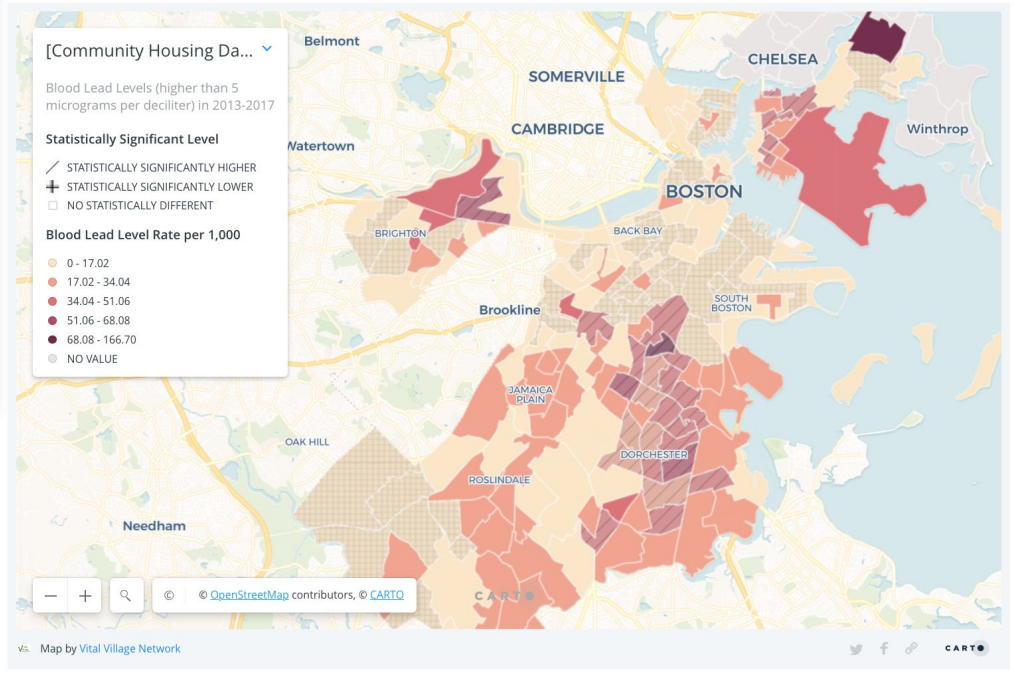
Data Disaggregation by Geography



Data source: Massachusetts Department of Public Health/Bureau of Environmental Health (MDPH/BEH) (2018). Massachusetts Environmental Public Health Tracking (EPHT).

Prevalence of children with blood lead levels (>5 µg/dL)

The map shows average annual prevalence of 9-48 month old children with blood lead levels (>5 micrograms per deciliter) in the City of Boston from 2013 to 2017.



Using the Community Housing Data Tool: Needle Safety



ADRIAN WALKER

Tired of stepping over needles near school, students say enough

By [Adrian Walker](#) Globe Columnist, December 18, 2018, 7:19 p.m.



Sixth-grader Sariah Gutierrez was among those decrying the number of discarded needles near the Orchard Gardens K-8 Pilot School. JESSICA RINALDI/GLOBE STAFF

- District-level maps used by policy stakeholders
- Map shared in community meetings by residents activists
- Peer reviewed article

The Abundance Boston Food Justice App



The Abundance App is a tool for families to **access up-to-date information** on food resources.



Families can leave reviews for locations and provide input on their experience.



Created by the Community Data Workgroup:
Boston residents, community leaders,
government partners and Vital Village staff



Vital Village staff and Community Data Workgroup members designing the Abundance App

What's included in the Abundance App?



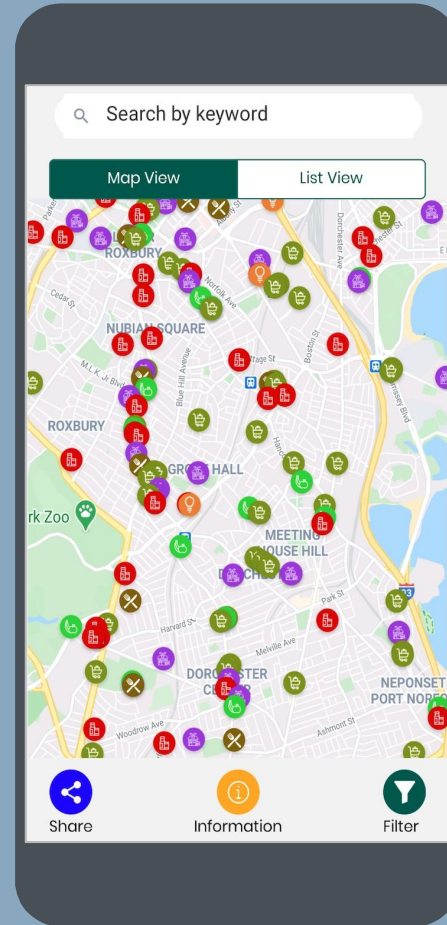
350+ Affordable or no-cost grocery, food pantry, WIC-approved stores and farmstand locations



100+ Free meal sites for adults, seniors and youth



22 Community organizations promoting food justice



Continuum of Community Engagement and Leadership

Inform

Provide community member with information, opportunities, and/or solutions

Consult

Request feedback on community decisions and activities by community members

Involve

Work directly with community members to make sure activities and decisions reflect needs and ideas of community members

Co-Create

Partner with community members in each aspect of decision making from inception to implementation

Empower

Place final decision-making in hands of community members.

Thank you to our Housing Data Tool and Abundance partners

- ❖ Boston parents, families, and community champions
- ❖ Data Across Sectors for Health (DASH)
- ❖ Department of Neighborhood Development
- ❖ Mandela Residents Cooperative Association
- ❖ Boston Housing Authority
- ❖ Boston Public Health Commission – Breathe Easy at Home
- ❖ Boston Inspectional Services Department (ISD)
- ❖ Medical Legal Partnership Boston
- ❖ Children's HealthWatch
- ❖ Concerned Elders
- ❖ Ruth's Way for Women
- ❖ The Eviction Lab
- ❖ Boston Mayor's Office of Food Justice
- ❖ Boston Mayor's Office of Food Justice
- ❖ Greater Boston Food Bank
- ❖ Madison Park Development Corporation
- ❖ Project Bread.
- ❖ The Doris Duke Charitable Foundation



Thank you!

Please take our post-webinar survey.

Data Across
Sectors for Health



UPCOMING

Session III:

**The Role of Policy in a
Multi-sector Approach**

September TBD