



**Data Across
Sectors** for **Health**



DASH Webinar Series
**Advancing Community Health
Through Equitable Data Ecosystems**

Session I:
Building Foundation with Community
June 7th, 2022 | 12:00 p.m. – 1:00 p.m. CT

Tips for Using Zoom



- ASL interpretation: please have your screen view set to “speaker view” to view speakers AND interpreters
- Spanish interpretation: use the control panel to change your channel to English -> Spanish
- Use the chat for easy communication between everyone
- Use the Q & A module to submit questions to presenters
- Closed captioning: you can hide subtitles in your control panel
- Use the hand-raising feature to come off-mic during Q&A
- For technical assistance, please DM “Susan M. DASH”

Data Across Sectors for Health (DASH)



DASH is led by the Illinois Public Health Institute, in partnership with the Michigan Public Health Institute, with support from the Robert Wood Johnson Foundation.



Data Across
Sectors for Health



Robert Wood Johnson Foundation

Session Goals



- 1. Identify the power dynamics** influencing individual and group interactions and communication in their local communities.
- 2. Understand trust-building and partnership** formation as interrelated core principles and activities of successful multi-sector data sharing initiatives advancing health equity.
- 3. Describe how building a shared vision forms the foundation** that is necessary for multi-sector data sharing collaborations to advance equity.

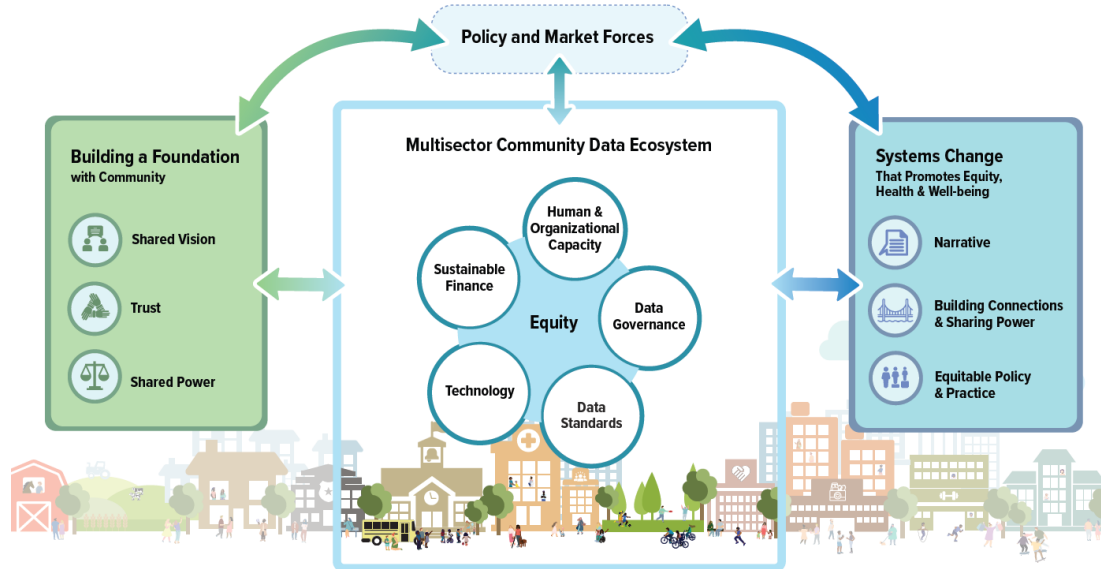
The DASH Framework

Equitable Data Ecosystems for Advancing Community Health



DASH Framework 3.0: Building Equitable Data Ecosystems for Fostering Community Health

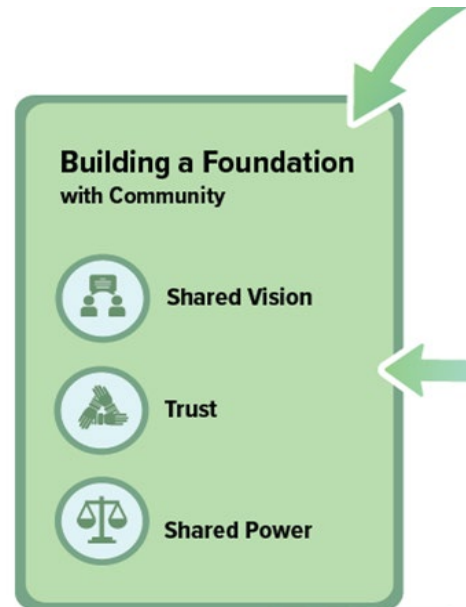
Data Across Sectors for Health (DASH), a national initiative of the Robert Wood Johnson Foundation, led in partnership by Illinois Public Health Institute and Michigan Public Health Institute, promotes new possibilities in sharing data to advance equity.



Starting with Community

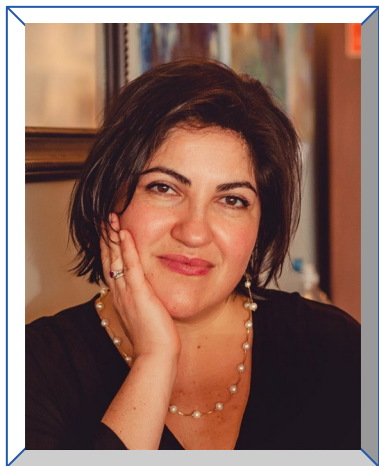


To harness these tools to advance health equity, it is important that collaborations begin *not* with technology, but with **human relationships**.



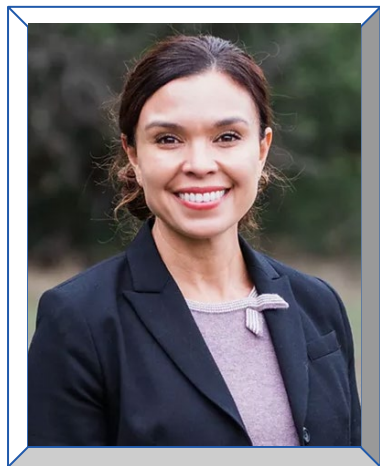
Kicking off the Conversation

Today's Presenters



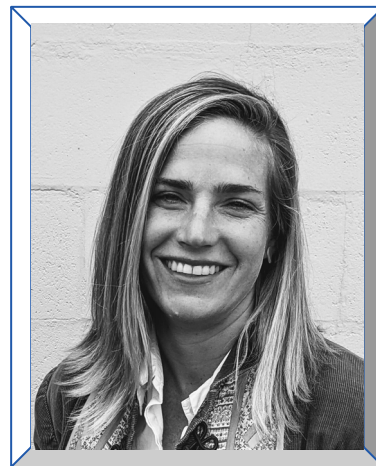
Ivette Guillermo-McGahee

Founder and Executive
Director
Allies in Caring



Elisa Orona

Executive Director
Health Improvement
Partnership of Santa Cruz



Eva Holt-Rusmore

Project Coordinator
DataShare Santa Cruz
County



Sarah Adler

Website Analyst
DataShare Santa Cruz
County



Ivette Guillermo-McGahee, MA, ACS, LPC
Founder and Executive Director



Coalition Leader / Catalyzer





Building the foundation in a community

- ***We foster collaborations***
- ***To improve our physical and psychological health***
- ***Implement creative programs***
 - ***Leadership/ connector's development***
 - ***Building a culture of inclusion***
 - ***Resource sharing***





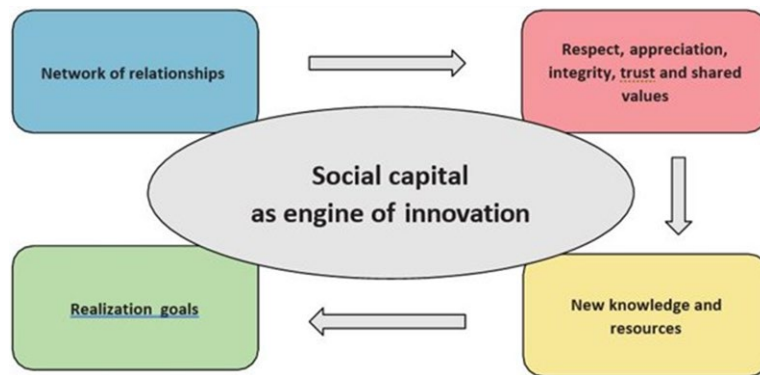
+



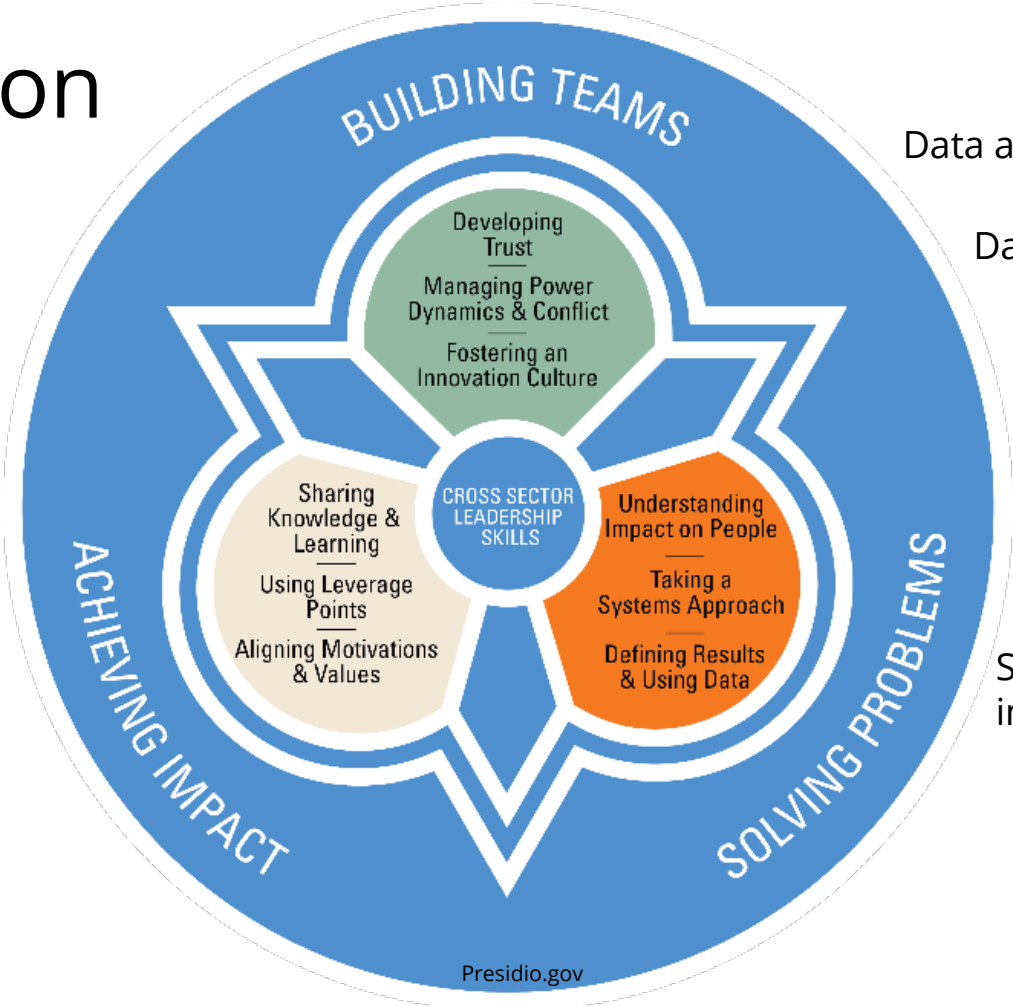
o



Data by itself does not have power



Foundation



Data as power

Data control & leverage

Innovating in relationship building

Servant leadership/ impact on people



Data for Action

An interactive platform with local, regional and national data available to everyone

Data para tomar Acción

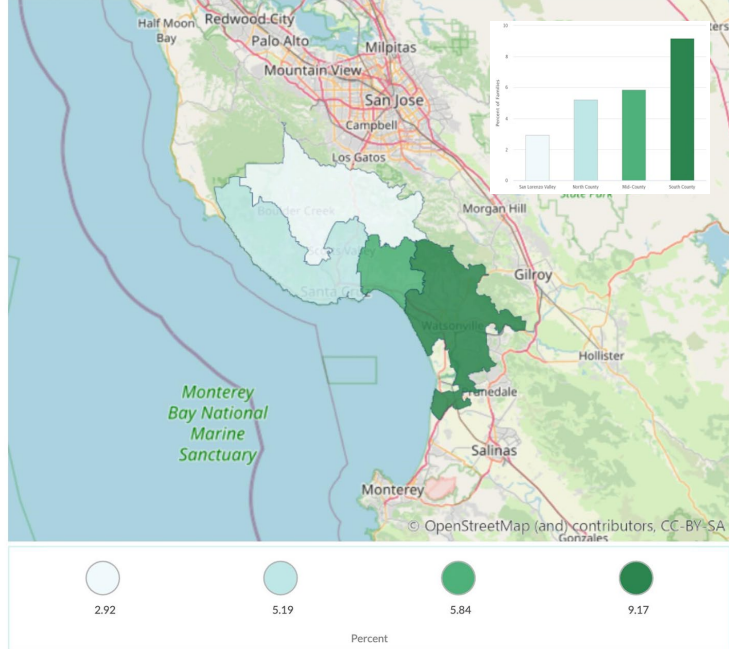
Una plataforma de datos interactiva con datos locales, regionales y nacionales al alcance de todos

www.datasharescc.org

Families Below Poverty

Region

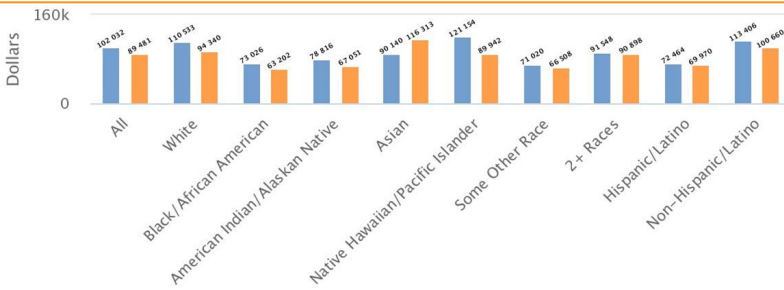
Measurement Period: 2022
Data Source: Claritas



Median Household Income by Race/Ethnicity

County: Santa Cruz

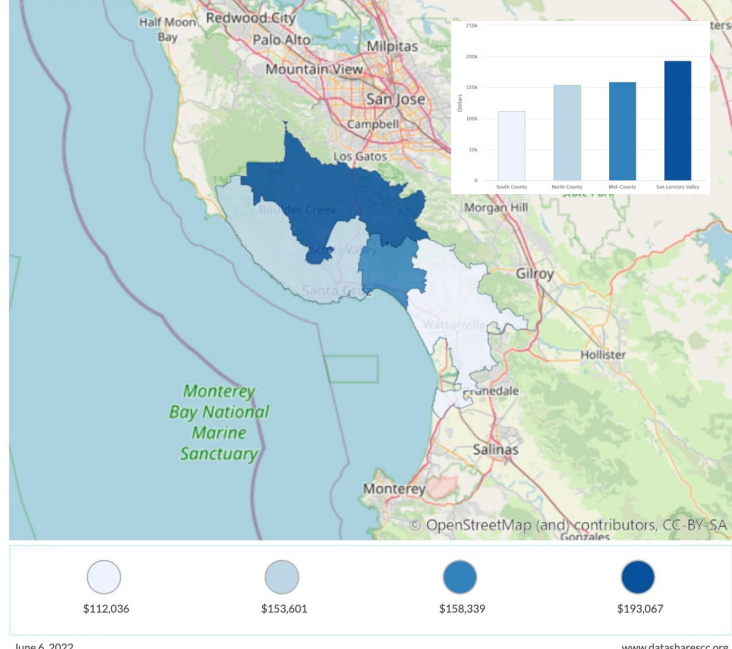
● County: Santa Cruz ● State: California



Average Household Income

Region

Measurement Period: 2022
Data Source: Claritas



Population

Population

County: Santa Cruz

269,893 Persons

State: California 39,725,146 Persons

Housing Units

County: Santa Cruz

107,794 Housing units

State: California 14,551,898 Housing units

Owner-Occupied Housing Units Median Value

County: Santa Cruz

\$945,508

State: California \$666,223

Percent Housing Unit Change: 2010 to 2022

County: Santa Cruz

3.18%

State: California 6.37%

Owner-Occupied Housing Units Average Value

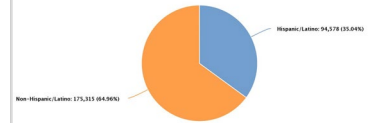
County: Santa Cruz

\$1,036,669

State: California \$811,018

Population by Ethnicity

County: Santa Cruz



Claritas, 2022. www.datasharescc.org

"An interactive data platform with local, regional and national data available to everyone"

[Vea Página de Inicio en Español](#)

DataShare Santa Cruz

The central hub of information for Santa Cruz County with the most up-to-date data, dashboards, promising practices, reports and over 475 community wellbeing indicators. The tools and data on this platform help local leaders, public servants, concerned community members, funders, researchers and students better understand our community and address root causes of social and economic inequities across Santa Cruz County.

*Find data**

*Find more information using keywords like: housing, mental health or diabetes.



Tutorials



Build a Custom Dashboard

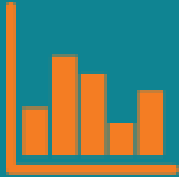


Create a Custom Report



Frequently Asked Questions

Main tools



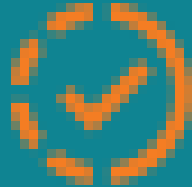
Access relevant
data



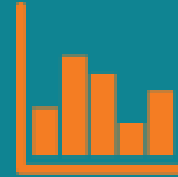
Generate powerful
reports



Create dashboards



Local Progress



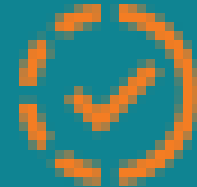
Tener acceso a
datos relevantes



Genere informes
potentes



Crear cuadros de
datos visualizados



Progreso local

Who is DataShare? Quien es DataShare?



Timeline / Linea de Tiempo

1

2017

HIP began data sharing initiative, Steering Committee formed

HIP comenzó la iniciativa de intercambio de datos, se formó el Comité Directivo

2

2018

Community RFP to identify platform vendor, Platform design, Funding partnerships with County/ Community Foundation

RFP de la comunidad para identificar al proveedor de la plataforma, diseño de la plataforma, asociaciones de financiación con el condado/la fundación comunitaria

3

2019

Project launched with 270 data indicators, Data inventory project, DASH grant helps catalyze community data integration

Proyecto lanzado con 270 indicadores de datos, proyecto de inventario de datos, la subvención DASH ayuda a catalizar la integración de datos de la comunidad

4

2020

County Health Services Agency becomes backbone, Admin Partner agencies MOU
La Agencia de Servicios de Salud del Condado se convierte en la columna vertebral, MOU de las agencias socias administrativas

5

2021

Annual plan and evaluation shows progress toward data literacy and outreach goals for equity

El plan anual y la evaluación muestran el progreso hacia la alfabetización de datos y los objetivos de divulgación para la equidad

www.datasharescc.org

6

PRESENT

Continue to fill data gaps (475 indicators to date), Data Committee, Accessibility Workgroup, questions on shared funding/ governance

Continuar llenando los vacíos de datos (475 indicadores hasta la fecha), Comité de Datos, Grupo de Trabajo de Accesibilidad, preguntas sobre financiación/gobernanza compartida

Collaborative growth points/ Puntos de crecimiento colaborativo



- Accountability/ Responsabilidad
- Power dynamics/ Dinámicas de poder
- Collective impact/ Impacto colectivo
- Decision making/ Toma de decisiones
- Funding/
• Fondos
- Transparency/ Transparencia
- Taking value driven action/
Tomando decisiones guiadas por valores



Thank you!

Please take our post-webinar survey.

Data Across
Sectors for Health



SAVE THE DATE

Session II:

Shared Community Data Ecosystems

July TBD